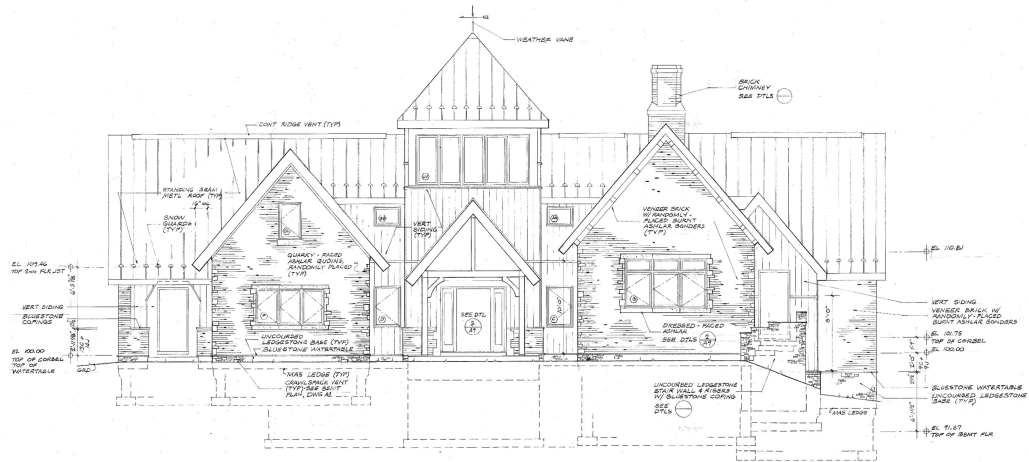


PROJECT - RESIDENCE

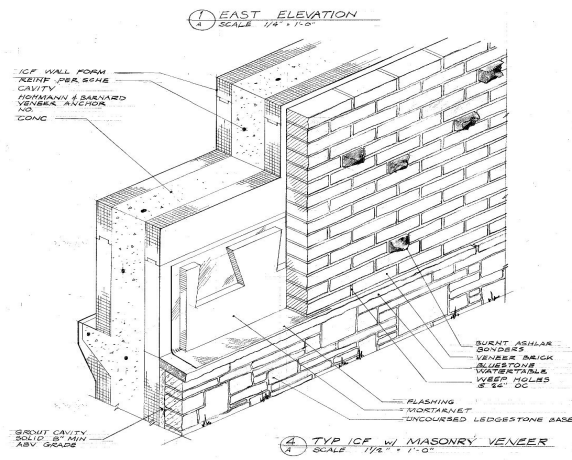
Chippewa Township, Beaver County, Pennsylvania

Building Type: Single Family Residence

Overview: 2400 SF residence on a rural site in Western Pennsylvania.



NORTH ELEVATION



DETAIL OF WALL CONSTRUCTION

This project will be sited near the top of a hill on a terrace formerly occupied by a barn and paddock. It will overlook a deep, wooded ravine and county parkland. The surrounding farmlands are old land grants given to soldiers in return for their service in the Army of the American Revolution. The architectural style recalls the urbane mid-Victorian homes of the post civil war period that are common on the farms and in the river towns of the surrounding area.

Role: Architect of Record

The house is configured in an “H” shape, with the living room, dining room and kitchen in the west leg and bedrooms in the east. A tower and central hall connect the wings. Walls are constructed using insulated concrete forms, and are faced with veneer brick relieved by contrasting randomly-placed burnt ashlar bonders and stone quoins at the corners of the principal masses. The brick masonry is founded on a bluestone water table and ledgestone base coursing detail, common in the area farmhouses. Heavy timber trusses and framing support the roof in the living-dining room, master bedroom, and at the entry porch. A Russian stove type masonry heater and fireplace is centrally located in west wing and visually separates the living and dining room areas.

D:\dos\bus\_dev\project\_profiles\Hansen.odt